


COMUNE DI CARLOFORTE
 Provincia del Sud Sardegna
 



PIANO PARTICOLAREGGIATO DEL CENTRO STORICO

Sindaco: Dott. Stefano Rombi
 R.U.P.: Arch. Paolo Parodo

VARIANTE SOSTANZIALE - CIG: Z443DBF96B

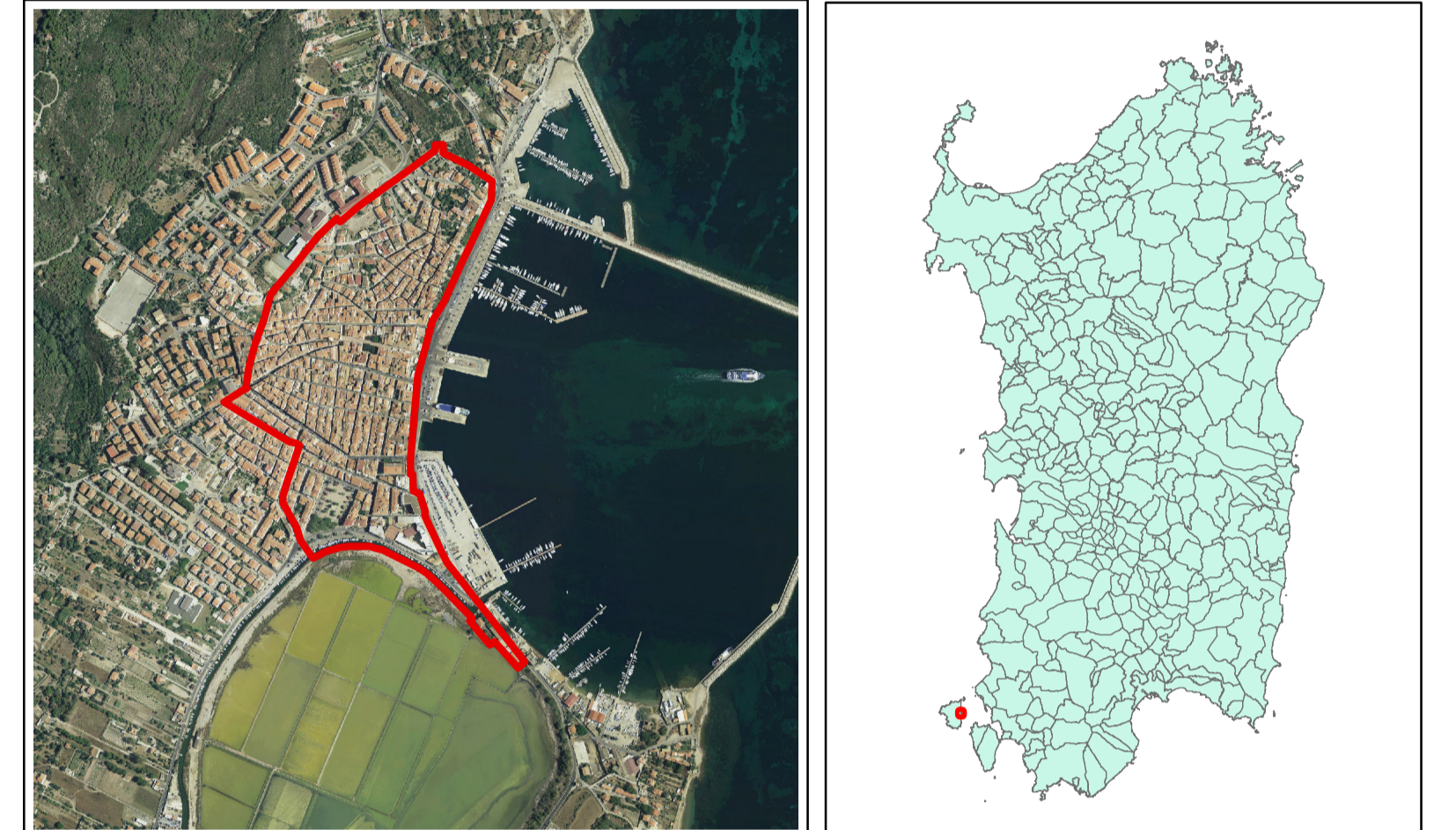
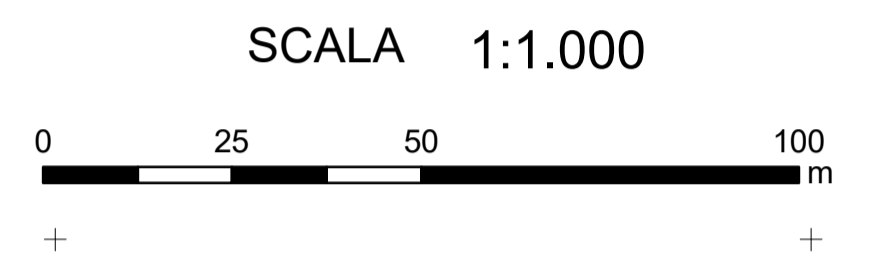
OGGETTO:
DESTINAZIONE D'USO

DATA	MAGGIO 2024	ZONA	A	SCALA	1:1000
------	-------------	------	---	-------	--------

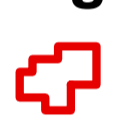
REVISIONE	DATA	DESCRIZIONE	APPROVAZIONE
0		PRIMA EMISSIONE	

TAV. 7

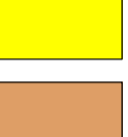






Il Committente: Amm.ne Comunale di Carloforte Il Progettista: Dott. Arch. Carlo Vigo



Legenda

 **Limite del Centro Matrice**

Destinazione d'uso prevalente

-  Artigianale
-  Commerciale
-  Ecclesiastico
-  Lotto Libero
-  Misto
-  Pubblico
-  Residenziale